

SAN ANTONIO JAM TRAILER INSPECTION SHEET

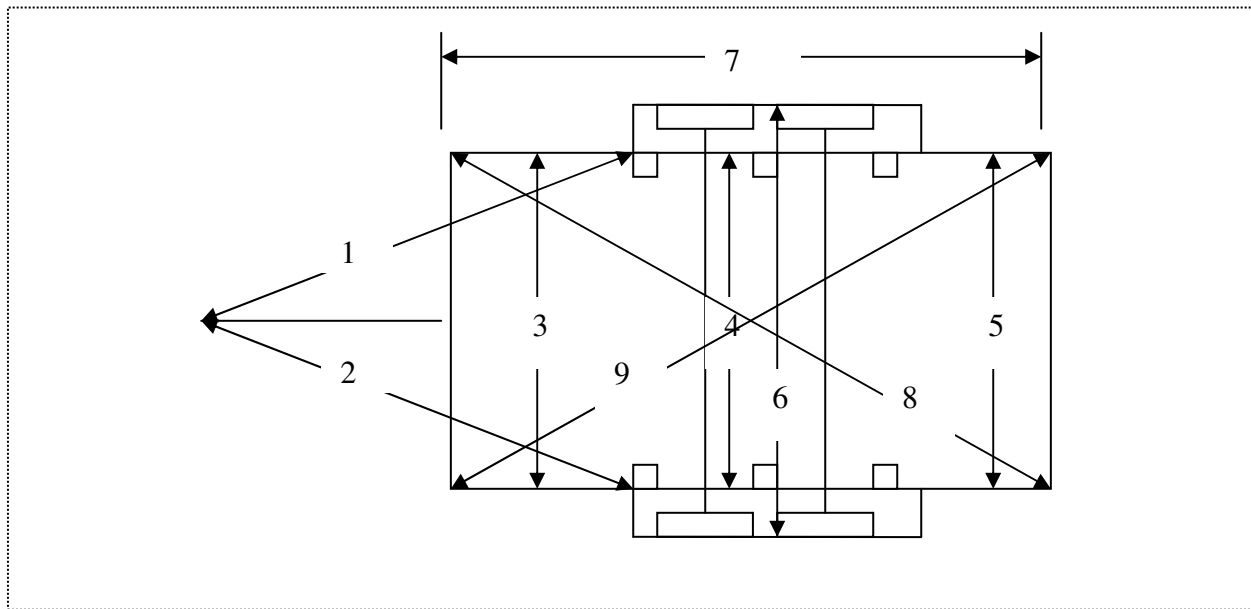
Class _____ Entry ID _____ Inspector/Judge _____

INSPECTION SUMMARY: (Lighting requirements are detailed on back)

Description	YES/OK	NO
1. Overall trailer width (line 6) is 102 inches or less		
2. Lines 1 and 2 are within ¼ inch of being equal		
3. Lines 3-4-5 are within ¼ inch of being equal		
4. Differences in Diagonals, lines 8 & 9 are less than ½ inch		
5. License plate with light and bracket		
6. Lights and reflectors meet specifications (Fed Table)		
7. Equipment a)Safety chains b)Break-a-way c)Trailer jack.		
8. Fender clearance above tires is adequate (minimum 4 inch)		
9. Lights & brakes work (Checked at Gemblor)		
10. Tie downs – D rings and stake holders are recommended.		
11. Other (identify)		

(Items 1 and 5 through 11 are checked by Trailer Inspectors at Gemblor Friday, 2-3 &4 by Judges on Saturday)

1. **Measurements** (To nearest ¼ inch) All Trailers - Tongue or Gooseneck Trailers. Record the measurements on the lines so they can be checked against plans in documentation.



- **Lines 1 & 2** are measured from front spring hanger to ball socket and determines center of hitch.
Difference in lines 1 & 2 to nearest ¼ inch _____
- **Lines 3-4-5** (Determines trueness of bed width.)
Difference in lines 3-4-5 to nearest ¼ inch. _____
- **Lines 8 & 9** are the diagonals. Equal length indicate squareness. Differences _____.

Check with Charles Turner – DOT Compliance Officer, if you have any questions or need clarification. Do not disclose measurements with exhibitors (exhibitors helping judges measure should have zero end of tape). Do not share information with anyone except DOT officer, Judges and judges helpers.

- **Line 6** should be measured from widest part of trailer (metal to metal). **Very important** –.(See Premium Book) Widest part of trailer in inches_____. Trailers will be measured for width at Gembler by Trailer Inspectors and not allowed to East gate if over wide (**more than 102 inches**) except with permit. Both Inspectors on Friday and Judges on Saturday are to measure trailer width. Notify Charles of any trailer that is over wide and without permit.
- **Line 7** identifies length of trailer and comes into play when trailer is 30 ft or longer. Length may determine trailer class. Inspectors will measure Length since it may influences Light requirements. Length in feet _____ (does not include tongue)

2. **Trailer Safety - Lights and Reflectors** - Check lighting according to *Federal Lighting Requirements Table*. Indicate if it meets requirements for each Area by checking ✓ if OK or NO if it does not.

In some cases Reflector may be built into light lens.

Sub Table - Basic Equipment Required on all Trailers

- **Area 1:** Tail Lamps _____ Stop Lamps _____ Rear Turn Lamps _____ Rear Reflectors _____
- **Area 2:** License Plate Lamp _____
- **Area 3:** Rear Side Marker Lamps (Red) _____ Rear Side Reflector (Red) _____
- **Area 4a:** Front Side Marker Lamps (Yellow) _____ **4b:** Front Side Reflectors (Yellow) _____
Both of these are located on each side as far forward as practical – facing sideward.

Sub Table - 30 feet or longer Trailers (Leave blank for trailers shorter than 30 feet.)

- **Area 5a:** Intermediate Side Marker Lamps (Yellow) _____ **5b** Intermediate Side Reflectors (Yellow) _____
Both of these are found on each side near center facing sideward.

Sub Table - 80 Inches or Wider (Leave blank for narrower trailers)

- **Area 6:** Rear Clearance Lamps (Red) _____ *At widest point near rear facing rearward. Usually found on rear of fenders.*
- **Area 7:** Rear Identification Lamps (Cluster of 3 Red) _____ *Located on rear center at top if stock or cargo trailer. May be found at bottom of utility or flat bed trailers.*
- **Area 8:** Front Clearance Lamps (Yellow) _____ *At widest point in front facing forward. Usually found on front of fenders.*

Sub Table 4 - 80 Inches or Wider and 10,000 lb GVWR or More (Leave blank for lighter trailers)

- **Area 9:** Rear Upper Body Marking (White strips on top corners) _____ *Not found on flat bed or low boys.*
- **Area 10:** Bumper Bar Marking (Red/White Reflective tape) _____ *Full width of bumper facing rearward.*
- **Area 11:** Rear Lower Body Marking (Red/White Reflective tape) _____ *On the rear – full width – facing rearward.*
- **Area 12:** Side Marking (Red/White Reflective tape) _____ *Each side – facing sideward – evenly spaced over 50% of length – includes necks of gooseneck trailers.*